

GENERAL INFORMATION

MAIN LOBBY HOURS: 8 a.m. – 5 p.m.

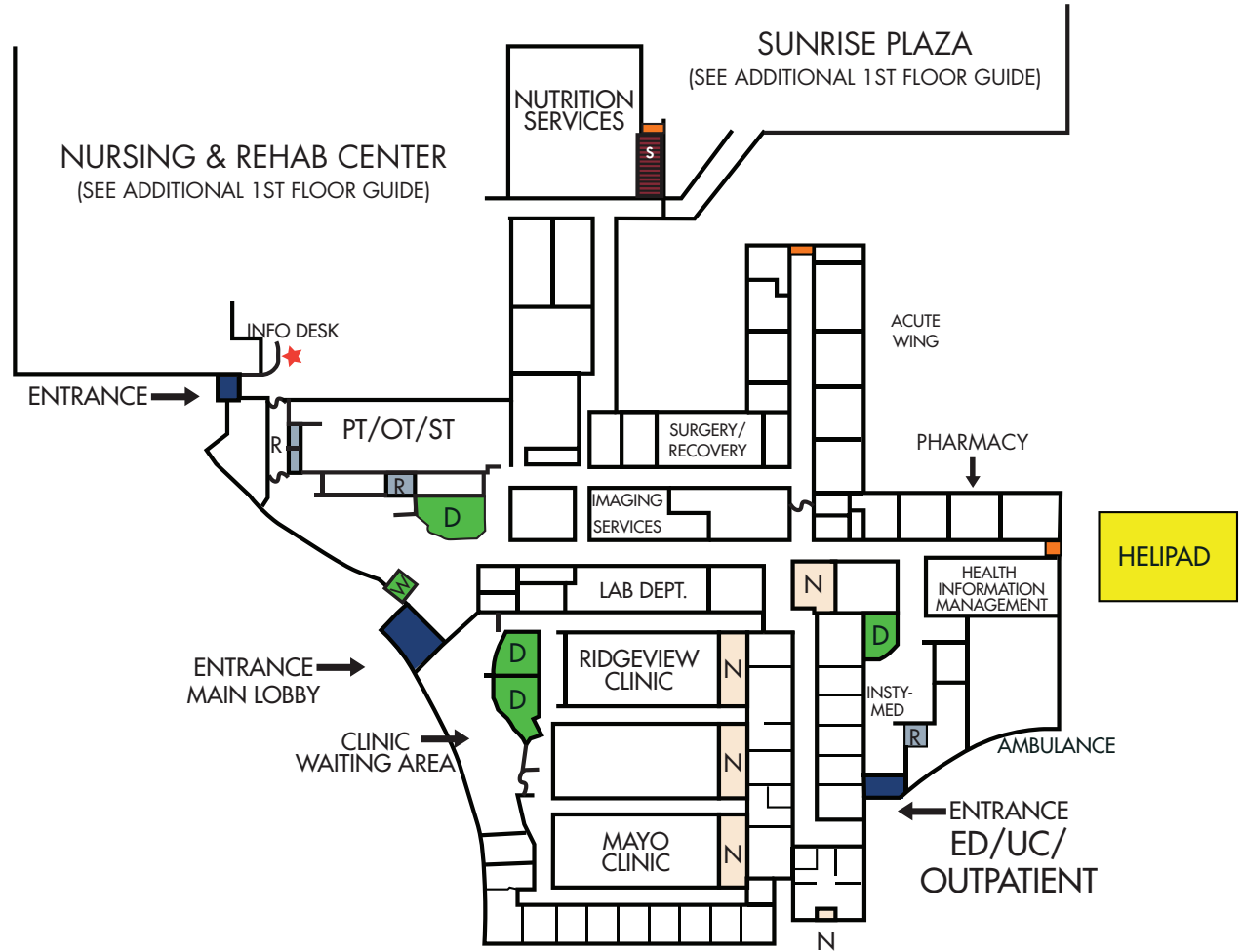
REGISTRATION HOURS:

Main Lobby Monday through Friday: 8 a.m. – 5 p.m.

After hours, Saturday & Sunday:

Registration is completed in the
Emergency Department (open 24 hours a day)

Urgent care 7 days a week: noon – 8 p.m.
(closed holidays)



KEY:

R: RESTROOMS **E**: ELEVATORS **S**: STAIRWAYS

★: INFORMATION **W**: WHEELCHAIRS **D**: REGISTRATION DESK

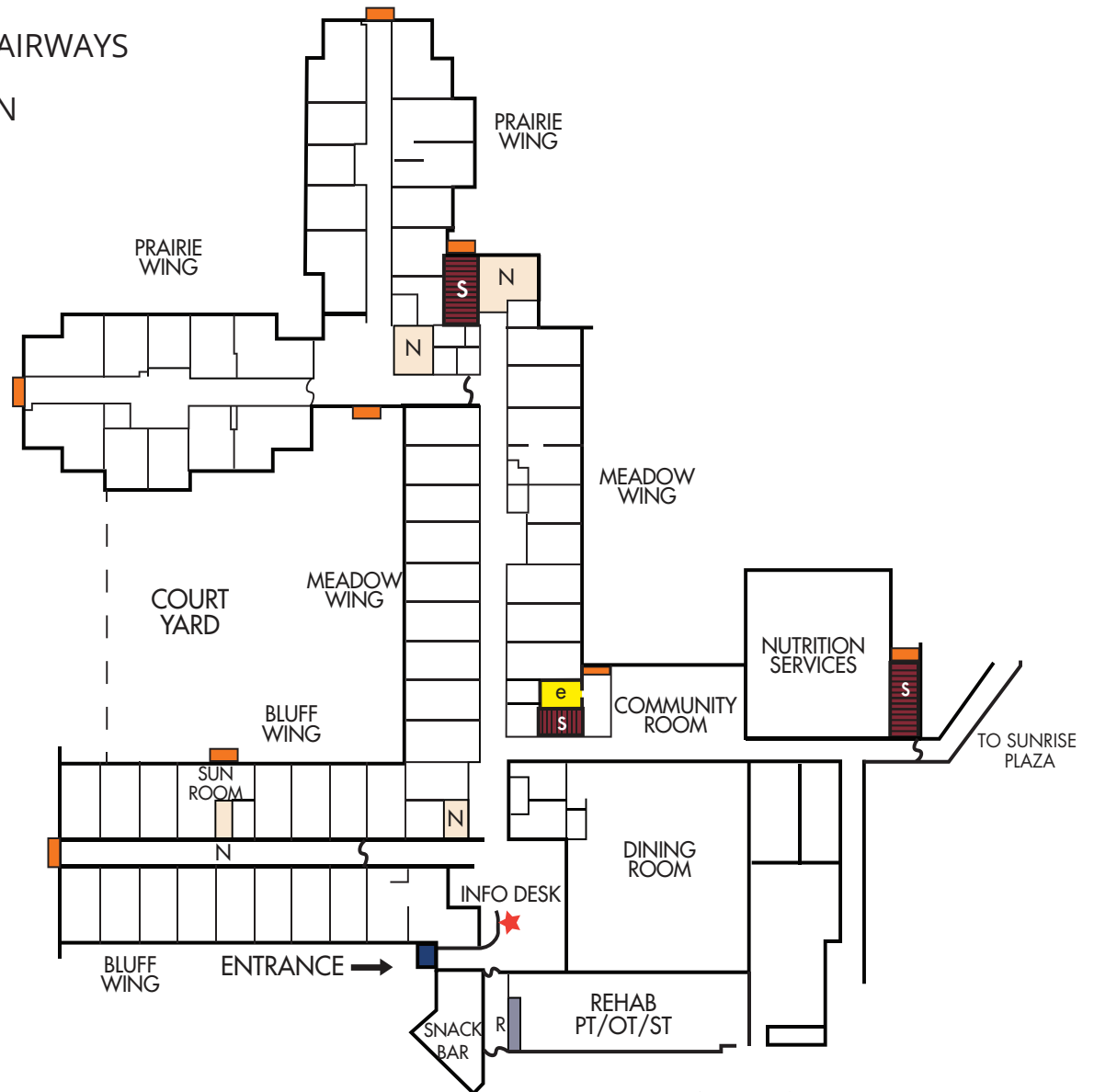
■: EMERGENCY EXIT **■**: ENTRANCE **N**: NURSING STATION

KEY:

R: RESTROOMS **E**: ELEVATORS **S**: STAIRWAYS

★: INFORMATION **N**: NURSING STATION

■: EMERGENCY EXIT ■: ENTRANCE



GENERAL INFORMATION

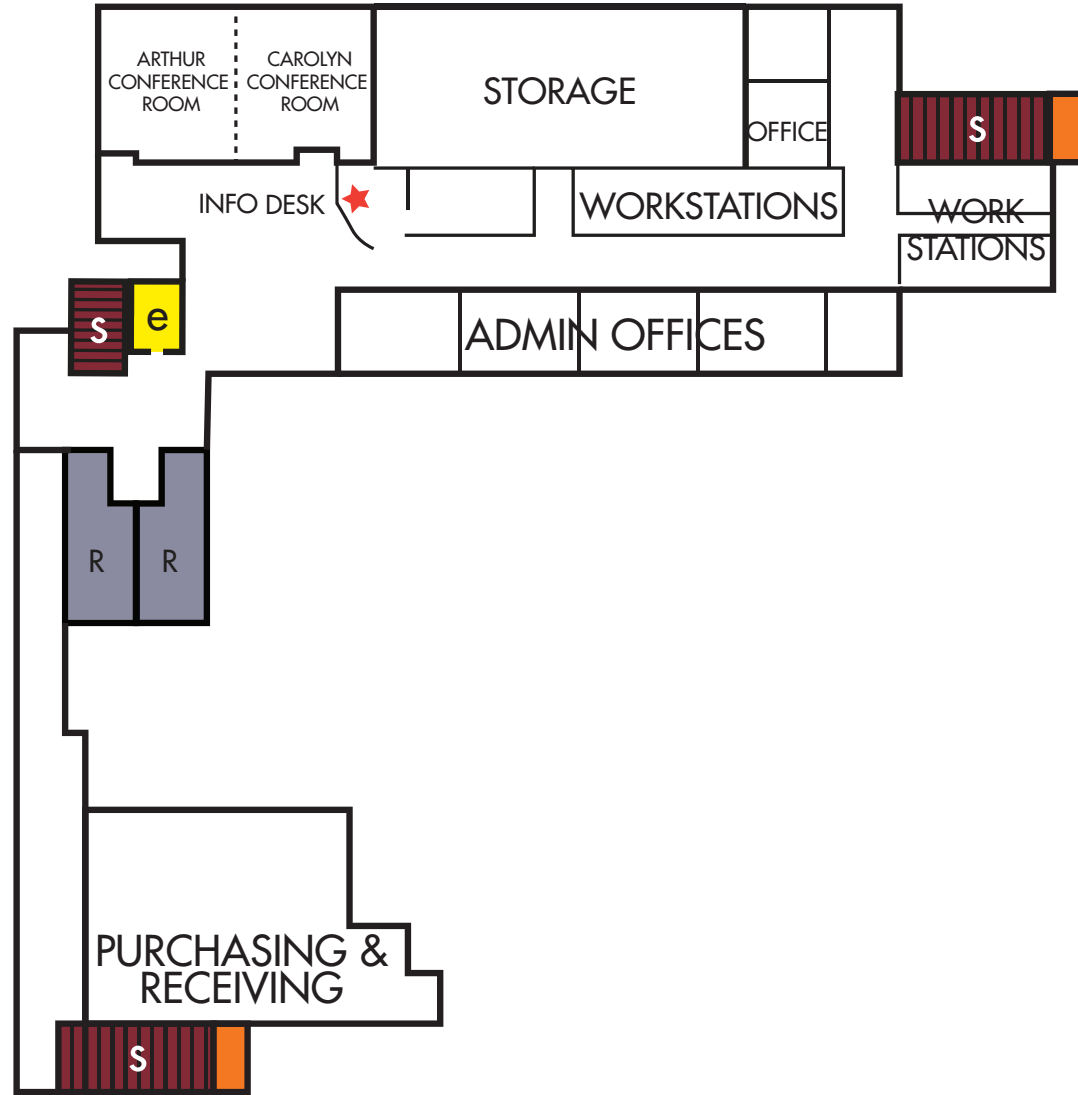
INFO DESK HOURS: 8 a.m. – 4:30 p.m.

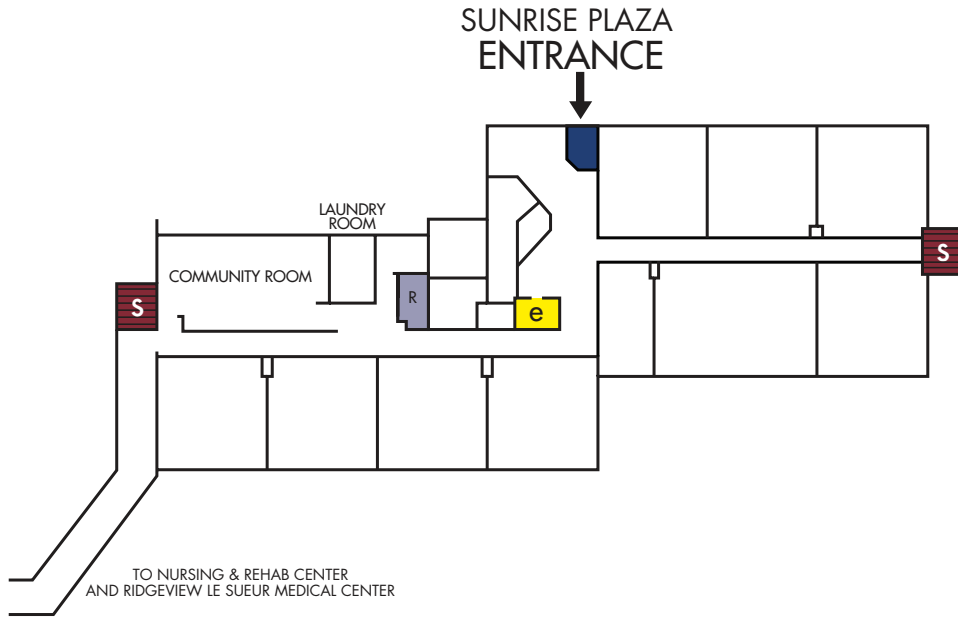
HOSPITAL & CLINIC
(SEE ADDITIONAL 1ST FLOOR GUIDE)

KEY:

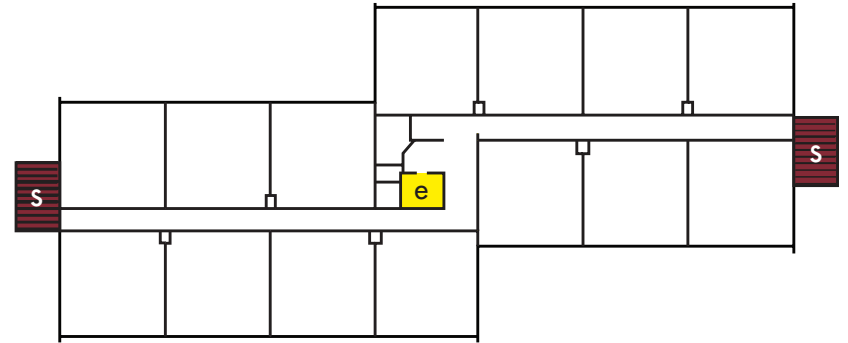
R: RESTROOMS **E**: ELEVATORS **S**: STAIRWAYS

■: EMERGENCY EXIT

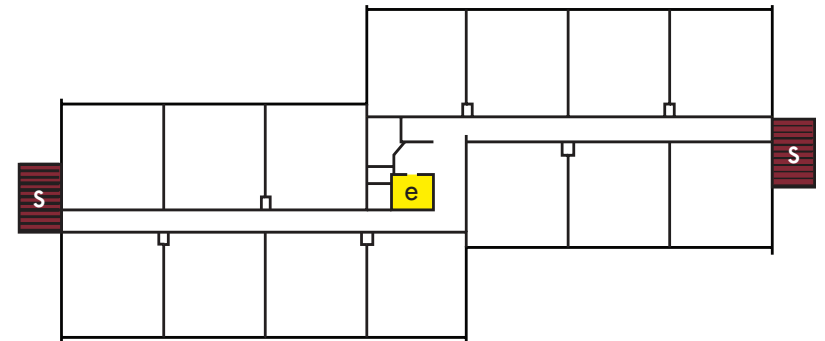




SUNRISE PLAZA SECOND FLOOR



SUNRISE PLAZA THIRD FLOOR

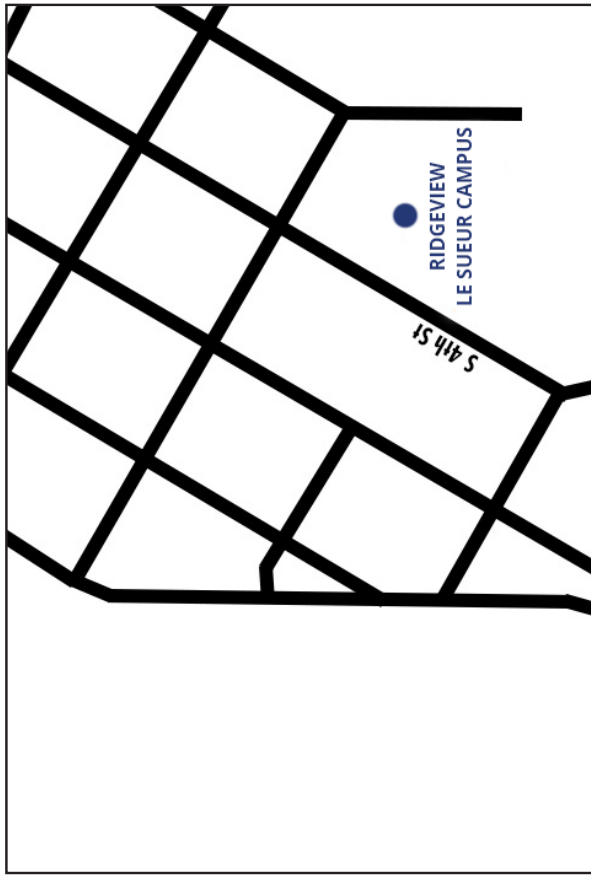
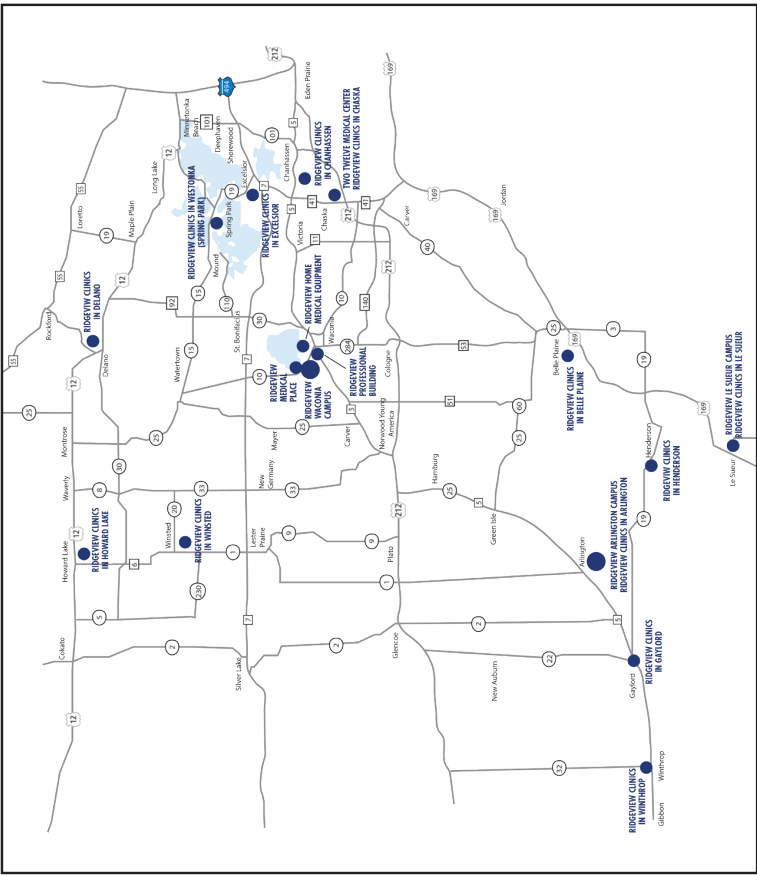


KEY:

- R: RESTROOMS
- : ENTRANCE
- E: ELEVATORS
- S: STAIRWAYS

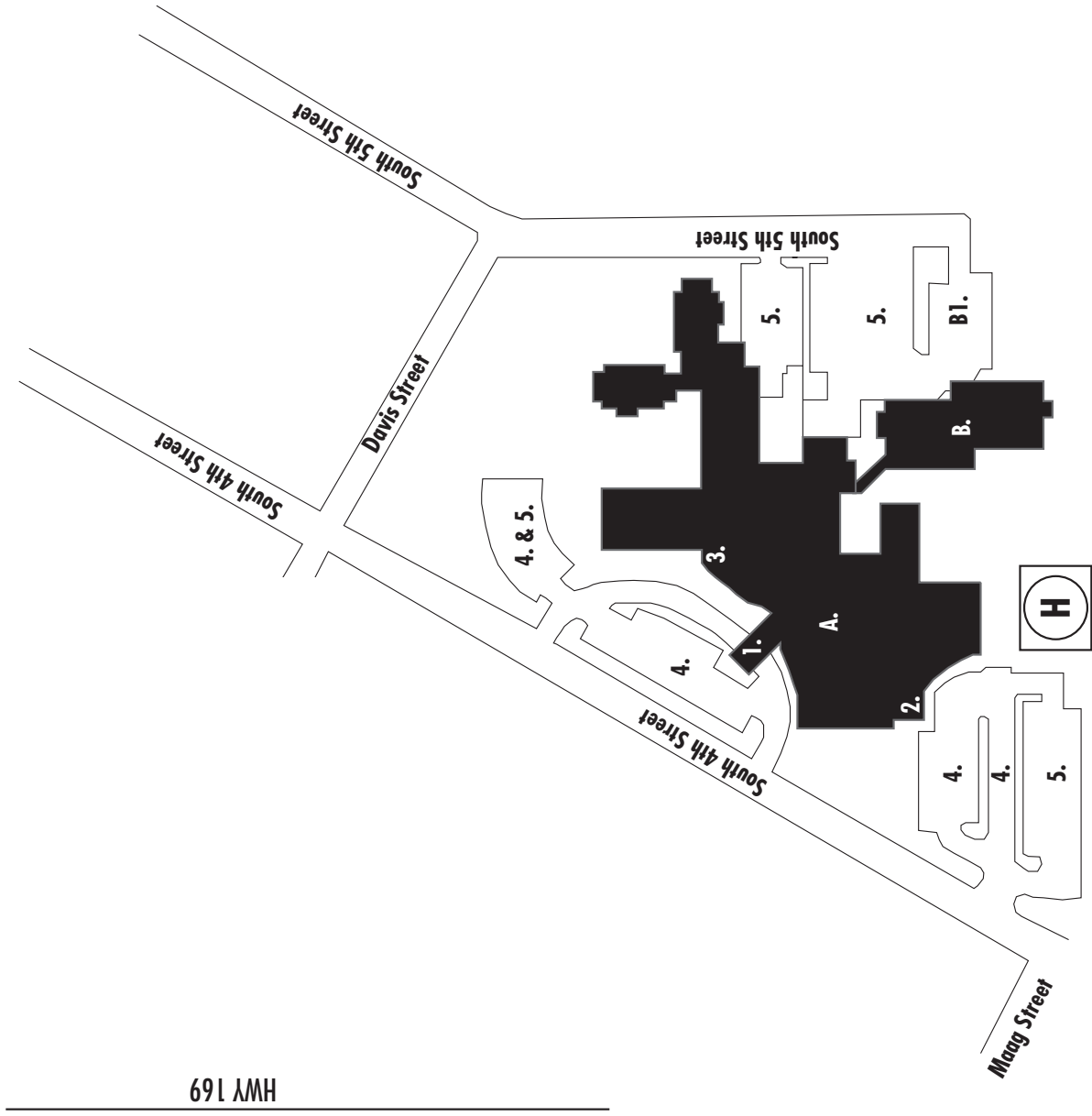
GETTING TO RIDGEVIEW LE SUEUR CAMPUS

- +** **From Minneapolis:** Take I-35W south to Hwy. 62 west. Continue on Hwy. 62 west to Hwy. 169 south. Continue on Hwy. 169 to Le Sueur. Take the Bridge St. exit from Hwy. 169 east to Le Sueur. Turn right on S. 4th Street and continue to the Ridgeview Le Sueur Campus. Turn right into campus.
- +** **From the North:** Take Hwy. 169 south to Le Sueur. Take the Bridge St. exit from Hwy. 169 east to Le Sueur. Turn right on S. 4th Street and continue to the Ridgeview Le Sueur Campus. Turn right into campus.
- +** **From the South:** Take Hwy. 169 north to Le Sueur. Take the Bridge St. exit from Hwy. 169 east to Le Sueur. Turn right on S. 4th Street and continue to the Ridgeview Le Sueur Campus. Turn right into campus.



RIDGEVIEW LE SUEUR CAMPUS
621 S. 4th Street • 507-665-3375

RIDGEVIEW LE SUEUR CAMPUS GUIDE



CAMPUS GUIDE

- A. Ridgeview Le Sueur campus
 - 1. Ridgeview Le Sueur campus Main Entrance
 - 2. Emergency and Urgent Care Entrance
 - 3. Nursing & Rehab Center Entrance
 - 4. Visitor Parking
 - 5. Employee Parking
- B. Sunrise Plaza Independent Living
 - B1. Sunrise Plaza Resident Parking